

Eastmain®

NEW CAIRO

OFFICES | RETAIL | CLINICS

MOBCO Developments



History in the Making

MOBCO successfully launched a plethora of megaprojects ranging from skyscrapers and commercial malls to residential compounds, prestigious hotels, and office buildings.

Empowered by its commitment to innovation, quality, safety, and the environment in all its endeavors, MOBCO was able to grow and achieve wide recognition with 5 divisions working hand in hand to bring its vision to life.

Over 20 years of transforming prime locations into exceptional & fully operational facilities.

Previous Projects

Hotels:

- El Jafry Tower / KSA
- Hilton Olaya / KSA
- Hilton Double Tree / KSA
- MAAD Towers / KSA
- Ajyad Hotel / KSA
- Sofitel / KSA
- Ascott / KSA
- Novotel Riyadh / KSA
- Radisson Hotel / KSA
- El Tayseer Hotel

Commercial:

- Prestige Center / KSA
- Localizer Mall / KSA
- El Mass Plaza / KSA
- Salama Center / KSA
- Pyramid Plaza / KSA

Administrative Buildings:

- King Abdullah Financial District KAFD / KSA
- TAIF Municipality Building / KSA
- Tatweer Building / KSA
- Pilgrim Ministry HQ / KSA
- Saudi Holland Bank / KSA
- Bank Albilad / KSA
- National Water Company / KSA
- Yamama Cement Company / KSA

Education:

- Islamic Uni Research Center / KSA
- Faculty Of Tourism And Hospitality / KSA
- Girls School Complex / KSA
- Rowad Al Khaleej International School / KSA
- The International School of Elite Education / Egypt
- The British School of Elite Education / Egypt

Eastmain

REDEFINING QUALITY TIME



*Step into an unprecedented
“work, play & stay” experience.*

Eastmain®

*is a vibrant mixed-use development
featuring offices, retail, and clinics.*

*Meticulously designed to be the
ultimate destination for quality
choices, and perfectly positioned in
the Palm Hills Katameya, Extension
PK II, Golden Square.*



The next leap in mixed-use design

After mixed-use developments made the dream of building a space for every desire possible, Eastmain set out on a journey where design experts and visionaries aligned their forces to develop a space that set a new benchmark in the Egyptian market.

Building the first-ever mixed-use development that is guided by the architectural discipline of ontological design; a philosophy that promises spaces at Eastmain have the capacity to enhance the quality of each minute spent.



Turning one size fits all spaces into custom-designed experiences.

Setting the standards for quality experiences

A seamless intersection between “work, play & stay” that helps you capture and enjoy every moment.

Cutting-edge design, unrivaled services, and a handpicked location that bring a level of outstanding quality to each experience.

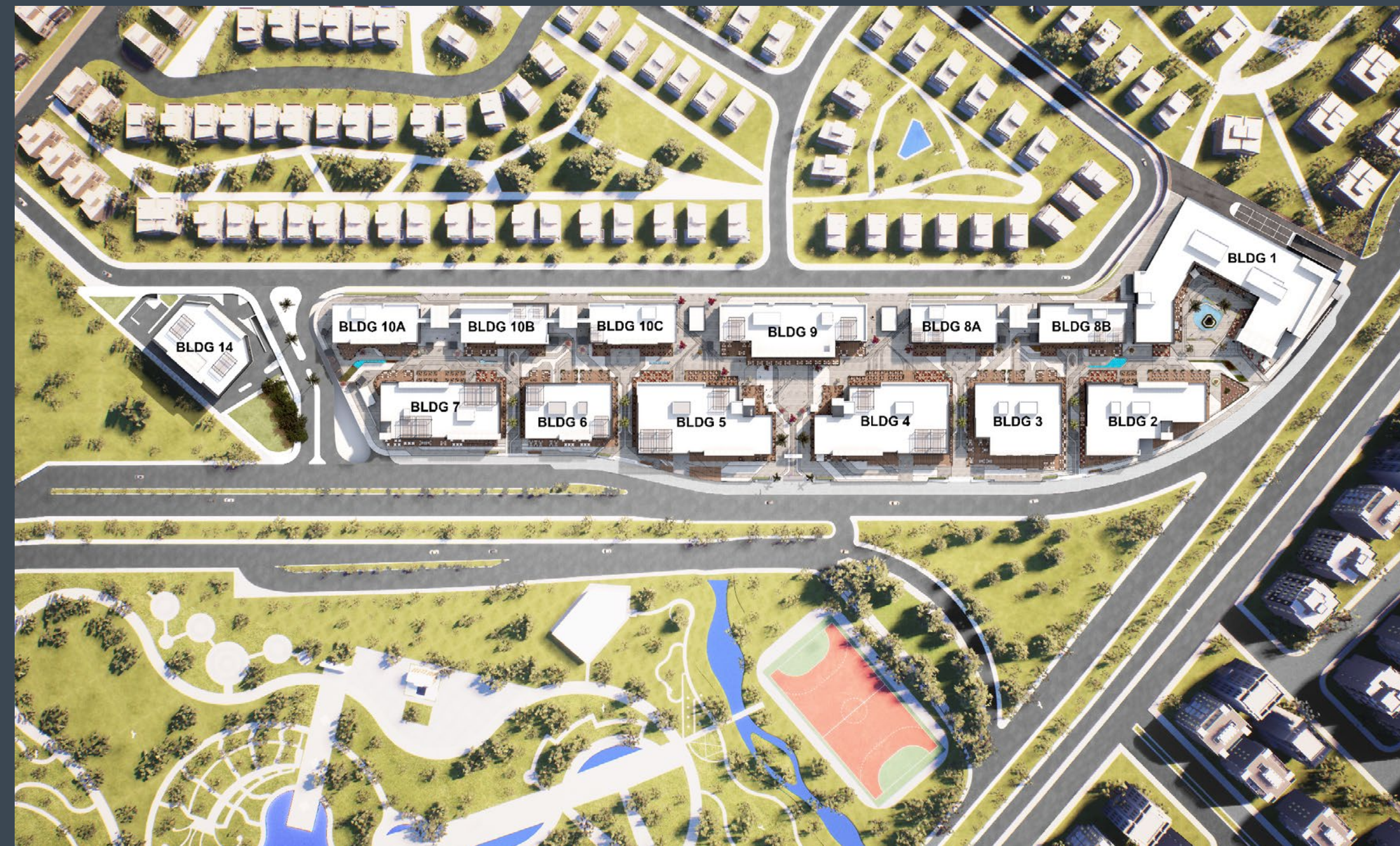
A promise that with every minute spent, quality is maintained.

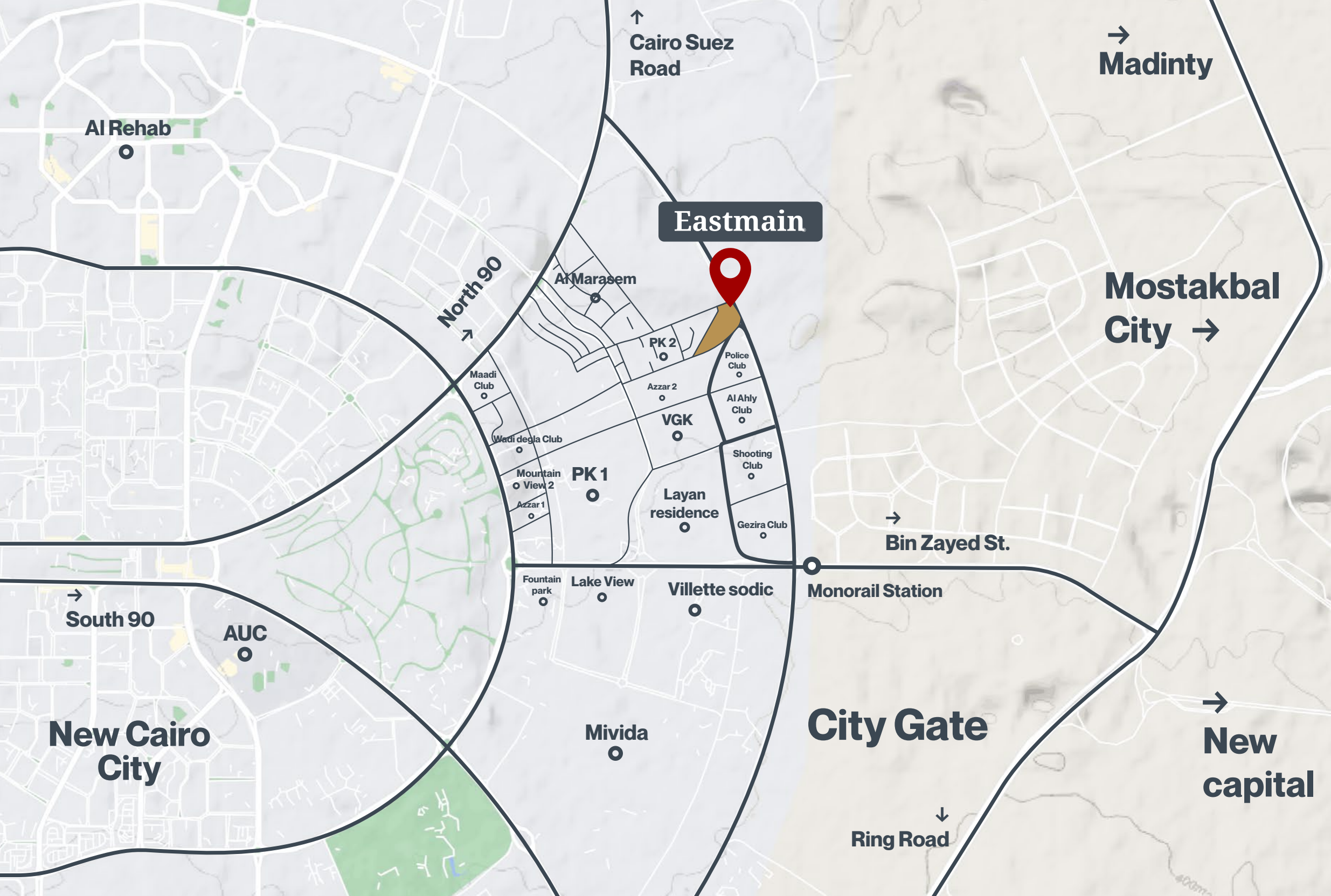


Capture, experience & maintain quality.

Project Scale

An exquisite range of 14 unique buildings established on 13 acres presenting an exciting mix of offices, retail, and clinics.





Project location

City Access, Extended Reach

- Situated in the pulsating heart of the Golden Square.
- Minutes away from the AUC, New capital, 90 street, suez road, and Middle ring road.
- Easily accessible by 3 of Cairo's major arteries.
- Connected to a variety of top-tier services and amenities.

Eastmain.

Project Partners



Architecture Design
and consultant



Commercial Advisor
and tenant mix



Lighting Consultant



THREE-SIXTY
CONSULTANCY

Real Estate Consultant
and advisor



Retail Leasing
& Advisory

8 Hours

Of quality work

Office layouts that are conducive to quality work

A flexible environment suitable for individual and shared work that gets you inspired with open-plan workspaces, risen ceilings, and increased access to natural light, and helps you stay focused with controlled noise levels, modern technology-enabled meeting rooms and work areas.

Meeting Rooms
For quality collaborations



Coffee Lounge
For quality connections



Reception & Waiting Area
For quality concierge service



Open Plan Workspaces
For quality performance





*An on-site array of
exquisite cuisines.*

Step back from the busyness of everyday
life, relax, and recharge with notable quality
restaurants, bistros, and cafes.



365 Days
Of quality dining

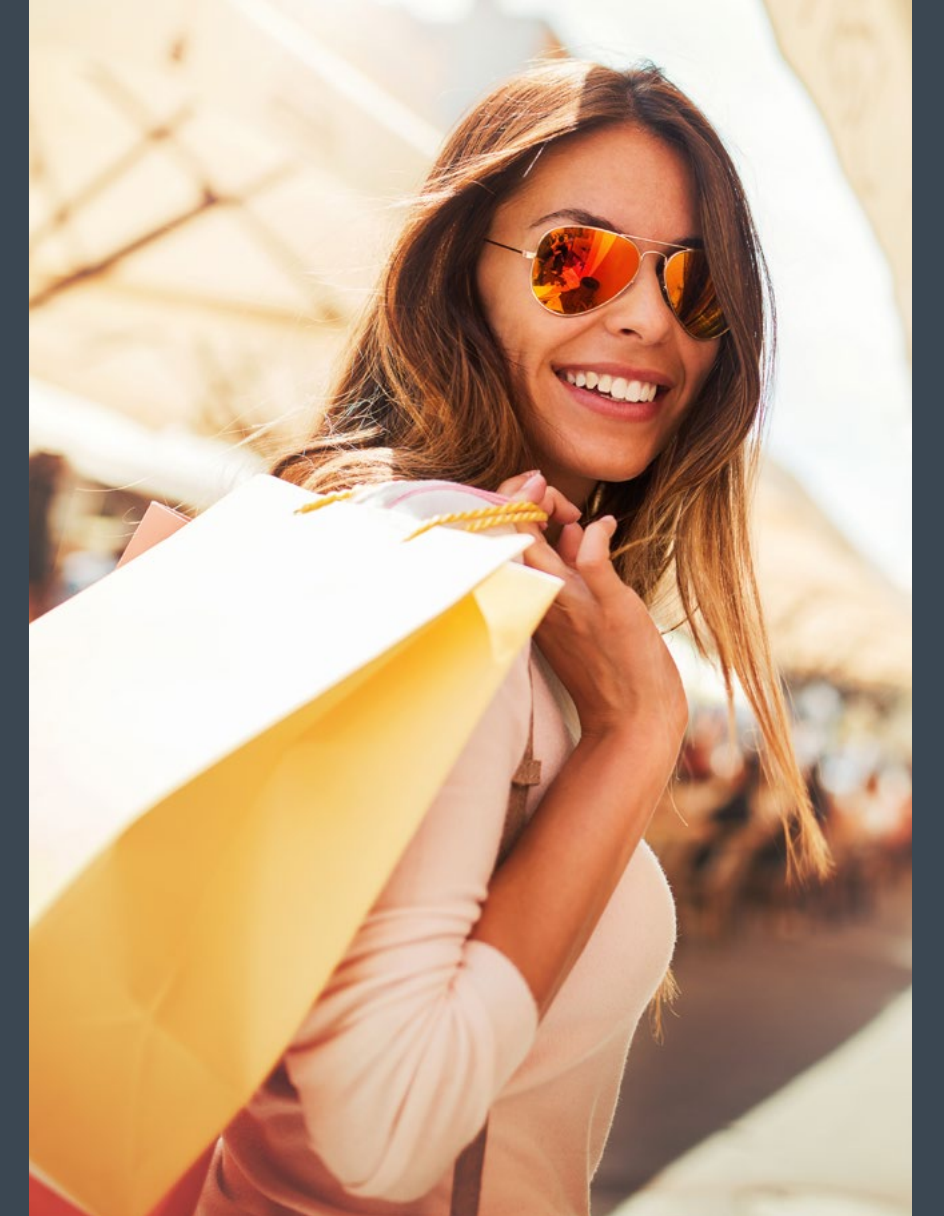


4 Seasons

Of quality shopping

*Luxurious retail outlets
& superior customer
experience.*

A well-designed invitation to shop that will reignite interest for in-store shopping and drive consistent foot traffic for tenants.



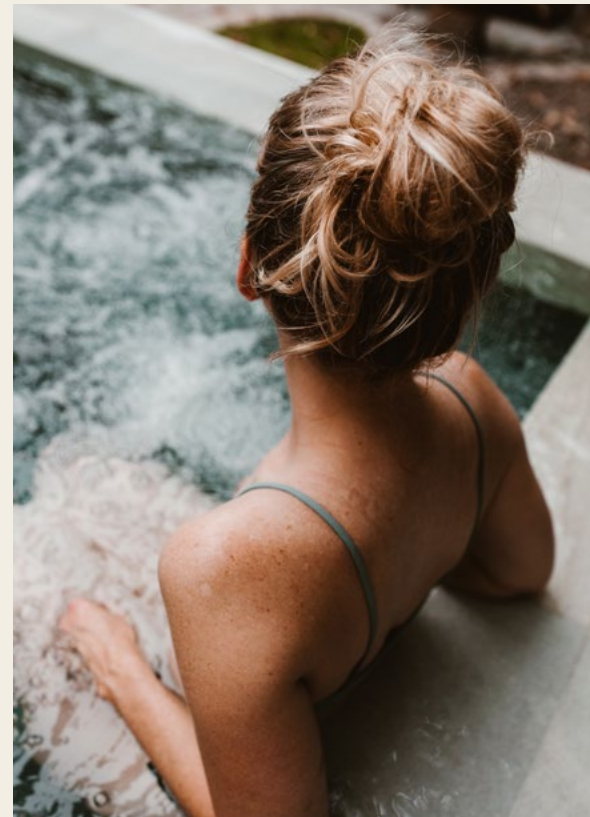
High-end wellness clinics and health club

Hit the reset button with a variety of tailored programs for detoxing, mental vigor, physical fitness, skin rejuvenation, and professional treatments

Clinics
For quality treatments

World-class Spa Center
For quality self-care

International Standards
Gymnasium
For quality workouts



52 Weeks

Of quality wellness

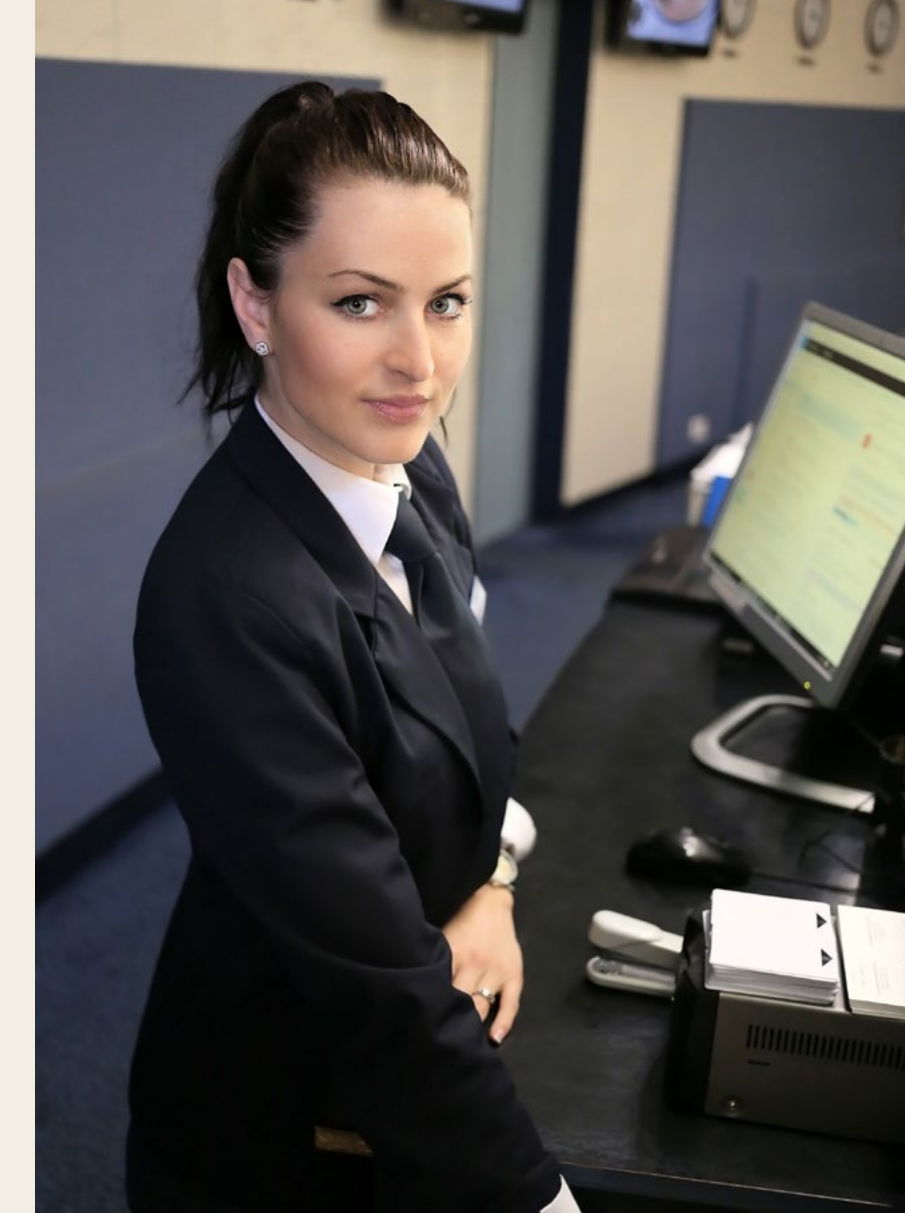
Where quality services prevail

Eastmain

Designed with the tiniest of details in mind to be an “experience-centric” culture that thought of everything.

24-hour concierge service

Make a favorable first impression and ensure a warm safe atmosphere for your office building with Eastmain’s professional multilingual front desk assistants.



2 levels of on-site Parking

Reduce the hassle of searching for an appropriate parking spot with two levels of dedicated indoor parking accommodations.



Professional security, cleaning & maintenance

Deliver seamless green cleaning services & maintenance solutions that focus on reducing germs, cleaning facilities, and minimizing harmful environmental impacts without disturbing your customers or staff.



Business-grade Wi-Fi & Secure IT infrastructure

Reflect a fast-paced corporate identity with powerful Wi-Fi and tight-knit security protocols to limit any potential threats or interruptions.



Banking & courier services

Instant cash access is only a few steps away with a dedicated and versatile ATM center covering Eastmain's commercial basement area.



On-site daycare center

Attract the best talents, reduce turnover & keep employees focused with top-grade licensed childcare programs, certified staff, and experienced pediatricians.



Property & leasing services

Make use of Eastmain's tenant representation and get access to an advanced screening system that locates tenants and a thorough lease negotiation process that responds to requests, drafts initial terms, and ensures timely lease collection & ideal communication.

